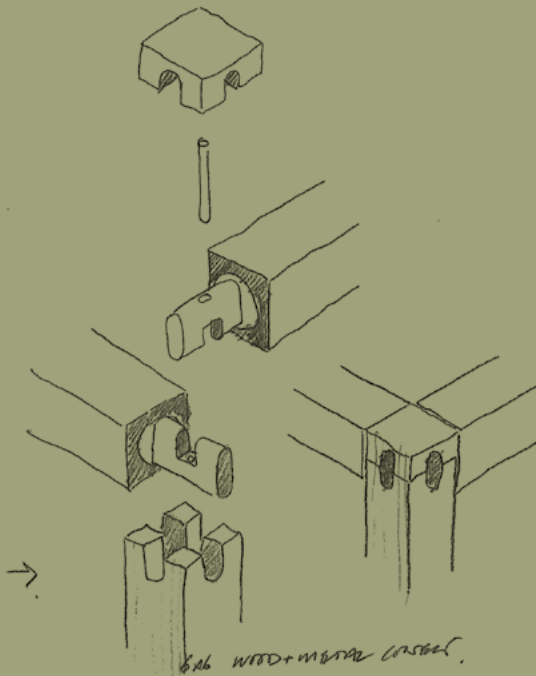


6x6

by Cesare Roversi

COMPOSE  
YOUR

LIFE



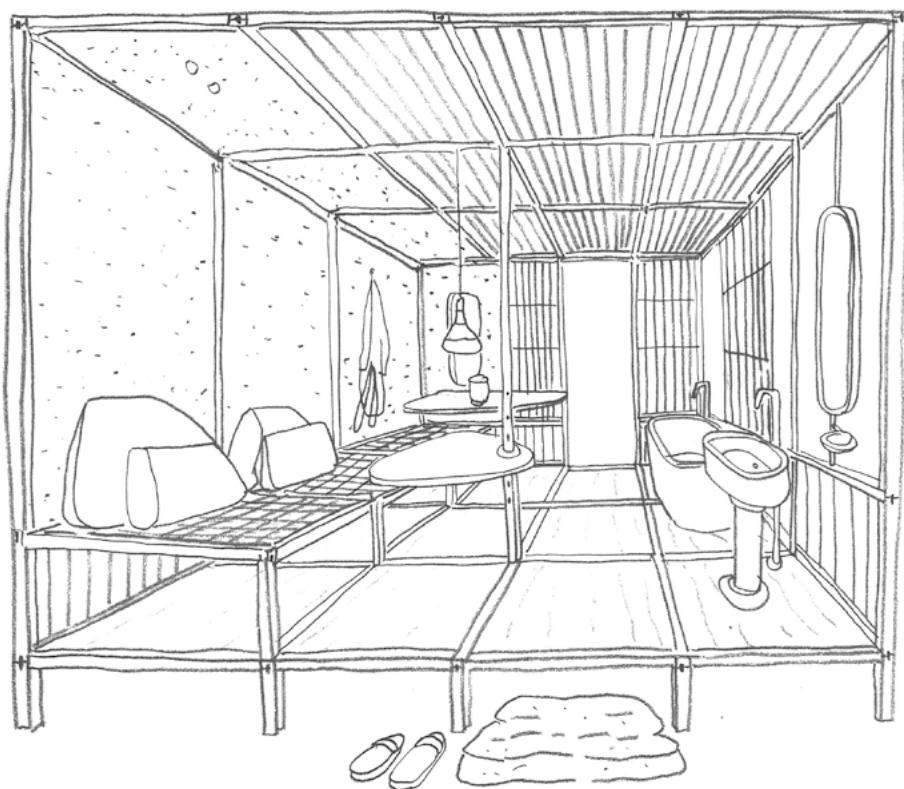
# Project

As our life styles evolve around the constantly changing way we work, relax and nurture our minds we find ourselves increasingly seeking more personalised spaces that can be composed to inspire our desires and reflect our personalities.

6x6 was conceived as an open framework to be configured to support different activities and settings. To demonstrate its potential to respond to our evolving behaviours, we have developed 6 conceptual 'micro spaces' that reflect contemporary life, and that could be inserted into existing environments or used as the basis of planning new forms of domestic landscapes.

Each 'Micro Space' reflects both the adaptability of the 6x6 frame, and the skilled abilities of Cesare Roversi srl to develop and execute complete spaces that combine a wide range of specifically selected materials, with refined details and purposely selected products from the world's most recognised brands.

The designs seek to continue the cultural experimentation for our domestic life and reference the design works of Franco Albini, Charlotte Perriand, Ken Isacs and the artists Andrea Zittel and Winfried Baumann

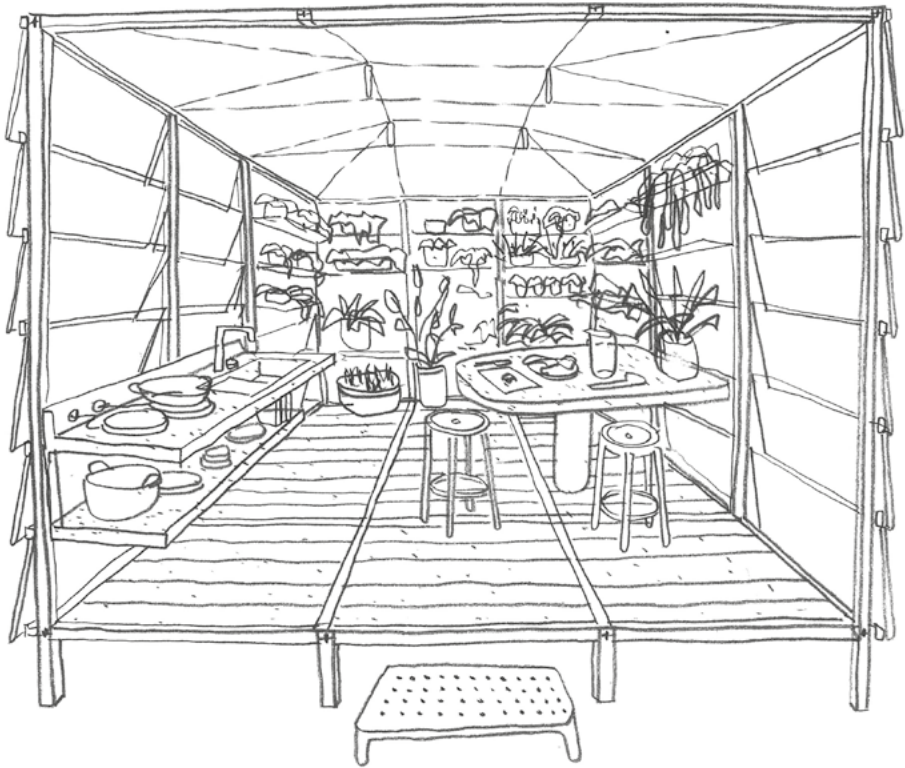


I.

## Bath and Relax

The combination of Japanese bathing culture and a large latticed daybed is designed as a space for body hygiene and mind. The brushed mahogany 6x6 frame, screens and boiserie combined with textiles made from organic fibres and dyes provide a humanistic and natural comfort. Whereas hand crafted carpentry and refined components in bronze add to its sense of touch and timeless appeal.

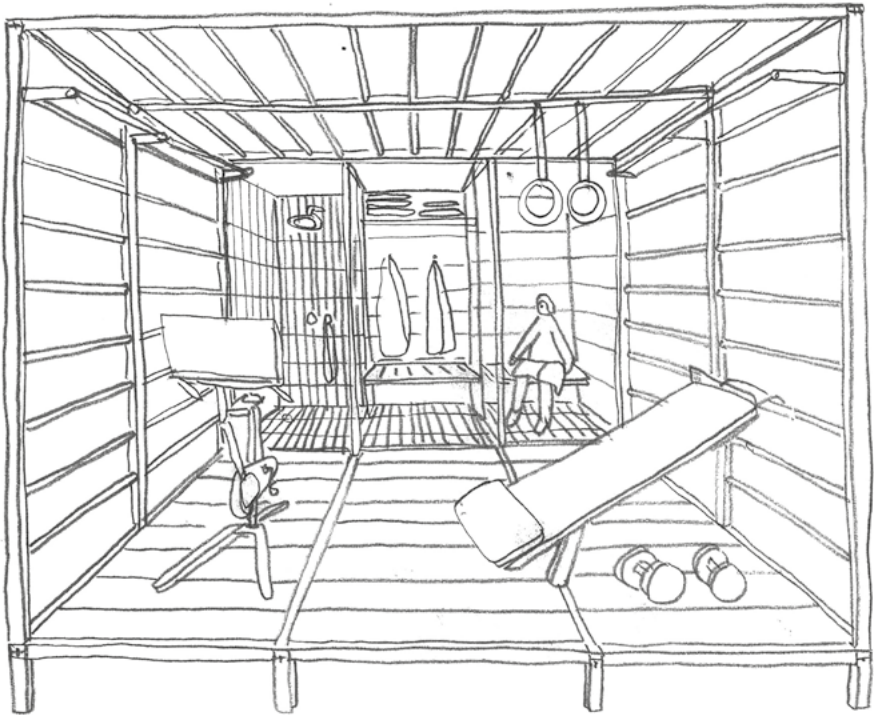




An space dedicated to the cultivation and preparation of natural foods and drinks that links organic growth and personal nutrition. The oak wood 6x6 frame is used to externally hang inclined glass panels, with zinc galvanized metal for the transparent roof supports and perforated plant tray shelves. The floor in terracotta planks and 'cocciopesto' table tops continue the earth linked connection to our wellbeing and health.



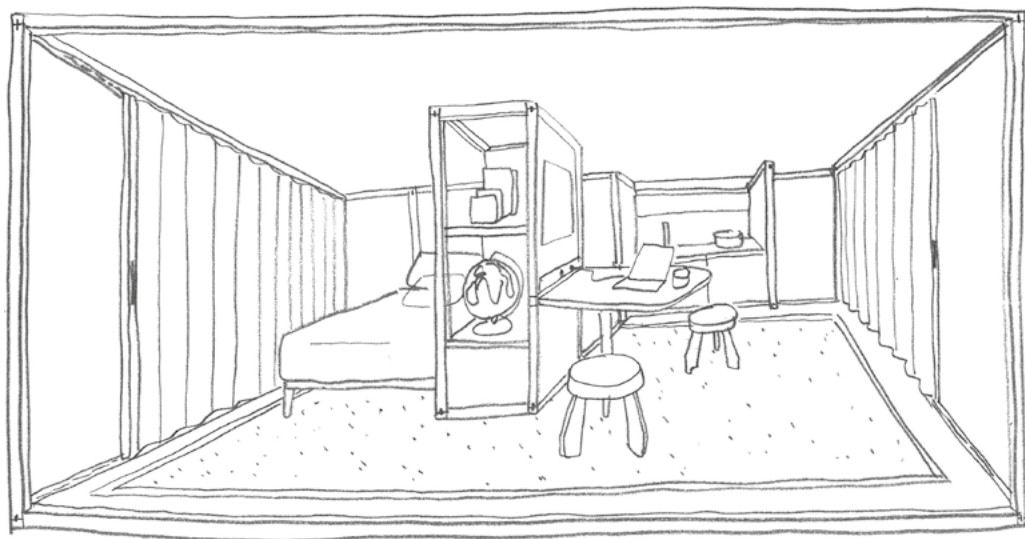




An adaptable fitness space inspired by the dowelled gym walls of the past that links traditional exercise methods and high tech performance equipment. The 6x6 frame in ash wood supports the round timber dowels and integrates the enclosed walls and doors of the shower and sauna units. A cushioned linoleum floor and micro mosaic tiling respond to the intensity of physical training and total body conditioning.

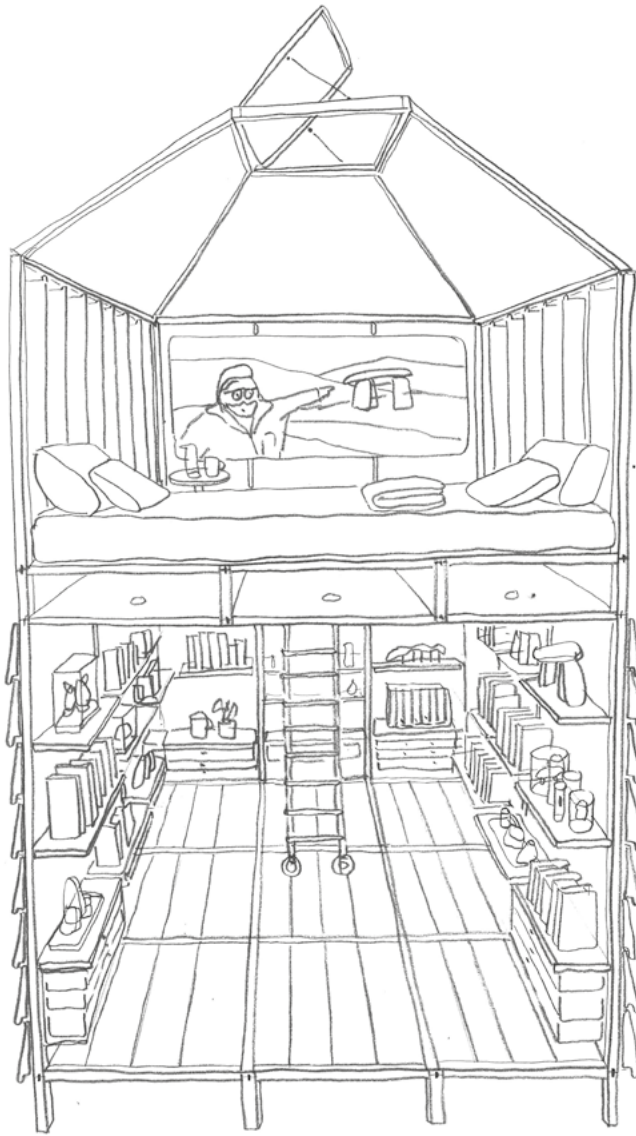






A freestanding arrangement of sleeping, food preparation and study for compact living landscapes. The 6x6 system provides a utilitarian framework combined with lacquered panel surfaces that integrate a mini kitchen, bed platform, fold down table and storage together with a sliding textile screen for moments of privacy.

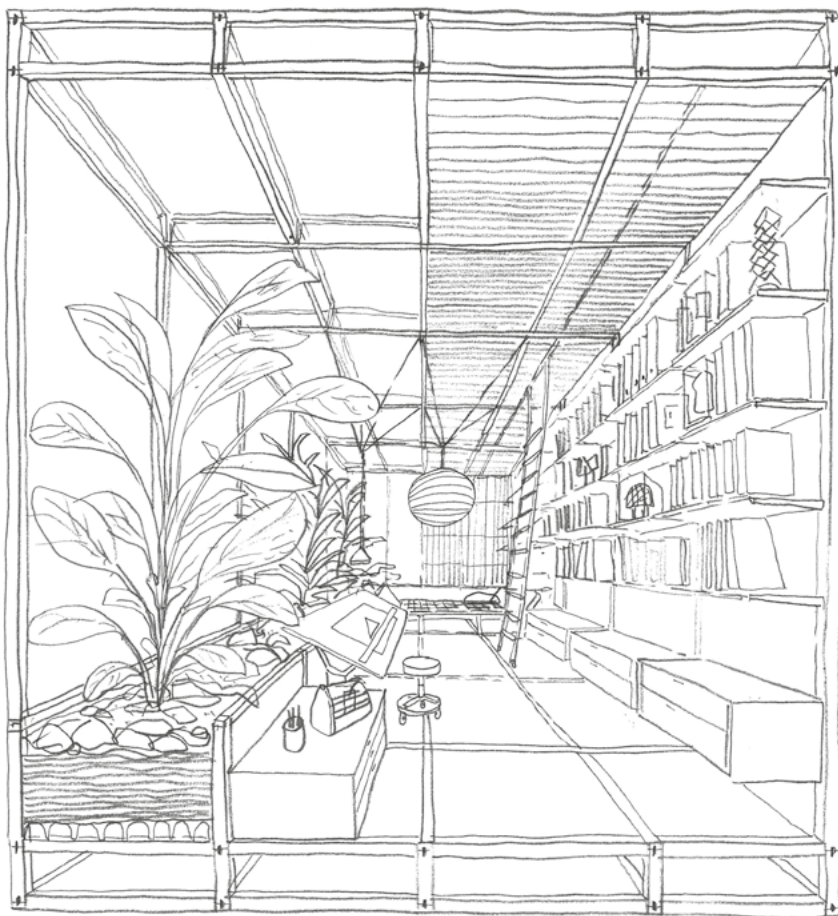




## Knowledge and Inspiration tower

v.

A vertical framework of 6x6 that integrates outer wooden louvres and display shelves forms a personal library for consultation and inspiration. The upper observation cabin is a space for reading, reflection and creation with a large lounging couch, media wall and opening shutters to personalise views and privacy.



A winter garden studio and archive filled with natural light and exotic plants. A tall airy space composed by 6x6 frames that integrate full height shelving, a deep planted window with extensive views and a large height-adjustable drawing board. A place to inspire 'hands on' creative thinking and the visualisation of ideas.

Art direction  
Nicholas Bewick

Graphic Design  
Studio Over

3D Images  
Aleksandar Jankovic  
Maite Vanucci

Copywriting  
Cesare Roversi

Printing by  
Arti Grafiche Castello Spa



6×6  
The art of making connection  
Design by Nicholas Bewick  
[www.seixsei.it](http://www.seixsei.it)

HQ ADDRESS  
Cesare Roversi  
Via 4 Novembre 26/28  
46024 Moglia (MN), Italia

CONTACTS  
+ 39 0376 59 8153  
[www.roversi.it](http://www.roversi.it)  
[info@roversi.it](mailto:info@roversi.it)

© Cesare Roversi  
VAT Number 01504650209

CESARE ROVERSI